



KACHEMAK BAY WATERCOLOR SOCIETY Newsletter

SPRING 2009

P.O.Box 98
Homer, Alaska 99603

E-MAIL: kbws@naturephotography.net
FIREWEED GALLERY <http://www.fireweed.com>

VIEW the KBWS NEWS in COLOR at the Fireweed Gallery website (www.fireweedgallery.com)

KBWS 13th ANNUAL SPRING SHOW

MAY 2009

at the Fireweed Gallery

This year among other wonderful pieces, the KBWS has completed two more local collaboratives: "Homer Harbor" and "Cranberry Patch"



"Cranberry Patch," a collaborative of works by Trina Fellows, Janet Fink, Bev Macy, Beth Nehus, Paula Dickey, Michael Murray, Marilyn Hueper, Lynne Sinnhuber, Lynda Reed, Ria Hueper



"Homer Harbor," a collaborative of works by Marilyn Hueber, Pat Wells, Donna Martin, Lynne Sinnhuber, Marybee Kaufman, Trina Fellows, Lynda Reed, Beth Nehus, Michael Murray, Bev Macy, Paula Dickey, Janet Fink

THANK YOU to the FIREWEED GALLERY for another great year of continued support for the Kachemak Bay Watercolor Society and the arts in Homer.

BIG THANK YOUS to DONNA MARTIN and NINA BURKHOLDER for taking care of us during these winter months. To PAULA DICKEY and MIKE MURRAY for bring stimulating and fun programs every month. WE LOVE YOU GUYS!!! HAVE A GREAT SUMMER, NINA!!!

WELCOME BACK to TONY CLAWSON, ELIZABETH and PAT... and MANY MANY THANKS to all who keep us active and productive, with continuing support in the arts.

Applying watercolor paper to canvas



Darla Myers

April 4, 2009 began with rumbles, erupting Redoubt ash clouds and accompanying ash induced lightening and thunder in some areas around the bay. Homer was blessed with a fairly heavy coat of ash by mid morning. Wind continued to circulate the fine grit making it hard to see at times, not to mention getting on and in everything.

Well, that didn't stop the hardy Kachemak Watercolor Society members from going to their monthly paint-in! HCOA building was opened and a tarp laid down, this time to prevent the ash from being tracked in as well to deal with drips and splashes from our brushes.

Our featured guest Darla Myers had made it down from Anchorage prior to the eruption and about 12 members participated in a wonderful afternoon of painting. We also shared the building with the Drama Slam group who were locked out of the high school and needed to practice for a play created and performed in 24 hours at Alice's Champagne Palace that evening – it made for a lively afternoon.



the Redoubt look



Darla presented her techniques for applying watercolor paper to canvas and then painting with watercolor. When pieces are completed they are given a couple coats of acrylic medium and an acrylic varnish. She showed us several examples of her work and also noted some of the things she found that worked better than others. She also encouraged us to experiment and try other things, as this is a process in progress. Applying watercolor to canvas creates an interesting depth. The edges of the canvas can be painted to coordinate with the main piece and framing is not actually necessary nor is putting glass over the piece. A UV spray is also available that can be applied over the watercolor piece to further protect it from the elements.

Darla had us working fairly small, as we wanted to try to complete a piece or near completion in the 4 hour period we had. Lynda Reed brought over some materials from Picture Alaska in case some people did not have necessary supplies and this was greatly appreciated. Acrylic gel medium was used to glue the paper down. It is important not to get the gel medium on the surface you are painting with watercolor as it acts as a resist and the watercolor paint will not adhere or soak into the paper. She showed us some examples in articles done by other artists what were huge. Darla recommended using 300 # paper (we used Arches 300# CP for the most part). 140# can be used but one



may want to experiment a little with wetting the paper to prevent buckling and bubbles under the paper. She usually paints the border of the canvas with acrylic paint rather than watercolor, however watercolor does work as long as you get a medium coating on over it fairly soon after it dries (otherwise it can bleed or come off with water easily).

I like this process. I've worked with Fredrix Watercolor Canvas which is interesting, but this process that Darla uses benefits from the feel, texture and absorbing qualities of watercolor painting while also taking advantage of the canvas format.



MEMBERSHIP INFORMATION

The Kachemak Bay Watercolor Society was formed to facilitate and promote watercolor arts. The society holds one general meeting and painting event per month to provide a platform for special programs focusing on watercolor and related issues. Membership is open to anyone interested in supporting watercolor arts. Membership dues are \$20 and paid on annual basis. For more information, please contact Tony Clawson 235-1576.

KBWS BOARD OFFICERS

Co-Presidents, Donna Martin and Mary Bee Kaufman	235-6348 299-2039	KBWS Gallery corner, Nina Burkholder and Pat Wells	235-2631 235-9030
Vice President, Nina Burkholder	235-2631	Programs co-chairs, Paula Dickey and Mike Murray	235-7953 235-0120
Treasurer, Tony Clawson	235-1576		



Chick Deal (above) adding design elements and texture to his matt (left)

EXPERIMENTAL PLACEMAT PAINTING: Tony Clawson hosted a prepping party with Chick and Barb Deal to gesso sheets of canvas that would be painted for use as placemats. At our Paint Together paints came out with bold textures and colors.



Lynda Reed

THE GESTURE and FIGURE OF THE DANCER

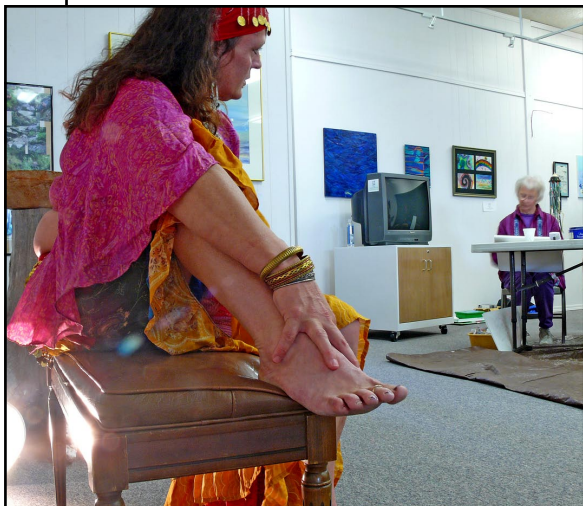
Rowan Mulvey brought her dancing costumes and striking stylized poses for a gesture and figure painting afternoon.



Renee Jahnke adding finishing touches



Mike Murray working on figure of the dancer



Rowan posing at the HCOA



KBWS workshops SCHOLARSHIP PROGRAM

Scholarship Cards

For several years the KBWS has gathered to paint scholarship cards. These 5 by 7 inch paintings and collages are each miniature masterpieces sold through the Fireweed Gallery to provide scholarships for students of our yearly watercolor workshop.

The tradition of the miniaturist carries a long and respected history that dates to Medieval Period. Tedious and delicate brushwork defines the great classic miniatures. Around 800 AD, the Celtic monks created 'The Book of Kells', a lavishly illustrated text of the gospels. Manuscript illumination developed (1000-1400AD) in the far east while European scribes embellished lettering and adding artwork to copied manuscripts, often including a portrait of a wealthy benefactor. The red pigment often used by the scribes is called "minium" which many scholars attribute the start of our contemporary word "miniature". In the 1500's miniature paintings were found apart from manuscripts. Asian traditions developed small single-sheet paintings that were kept in albums. This small, sized painting eventually gave rise to the miniature portraits of the 17th Century....and today trading cards and our own scholarship card program.



We carry on this unique tradition with our cards, whether portrait or landscape, abstract or representational.

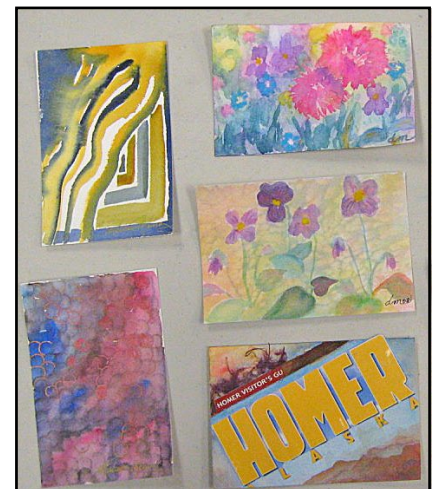
Summer is a great time to resupply the card box.! Take a moment to paint something small for a good cause.



SCHOLARSHIP GUIDELINES

The complete guidelines are available on the Fireweed Gallery web site.

A partial scholarship, in the amount of \$125.00, is available for the KBWS sponsored workshop. If you need financial assistance to attend this workshop, please submit a short statement describing your interest to KBWS Scholarship, PO Box 2119, Homer, AK 99603; or e-mail to elizabethpetersen@yahoo.com, to be received by June 15, 2009. Decisions will be made by July 1. The scholarship recipient will be required to submit a non-refundable deposit of \$50 within two weeks of notification, and to complete a follow-up after the class.





CLAUDIA'S BOOKSHELF

Much thanks to Donna Martin and Donna Rae Faulkner for cataloguing the many wonderful books and reference materials. There is a sheet for checking out these items inside the Tony Clawson cabinet. Reference materials will be available throughout the summer.



“We’re Traveling Musicians”

In January Michael Murray brought musicians and his musician-based art to the Fireweed. (photos by Christina Whiting)



Meriam Linder



Gaye Wolfe



Bev Macy

Life Drawing and Painting

Thank you to Gaye Wolfe who modeled for the group in March.

SHOWS

Fireweed Gallery

MAY *KBWS 13th Annual Spring Show*

MAY "*Reflect Yourself,*" clay tiles, mirror, grout, wood
by Ruby & Tim Haigh

JUNE *Jan Thurston "New Works," watercolors*

Picture Alaska Art Gallery

MAY "*By Land and By Water*" *Original Temporal*
Paintings by Andy Hehlin

Bunnell Street Art Gallery

MAY "*Plumas,*" by *Linda Infante-Lyons*

JUNE Skin Sisters, dedicated to Fran Reed
Countenance: Modern Masks of the North,
curated by Elizabeth Eero Irving

Ptarmigan Arts Back Room Gallery

MAY "Reflections of Life on Kachemak Bay"
mixed media invitational

Homer Council on the Arts

MAY *Kachemak Bay College Annual Spring Student*
Art Showcase

Art Shop Gallery

MAY "*Birds of Alaska*"
multi-media show

Anchorage Museum of History and Art

through JAN 2010 *Creating Alaska:*
Origins of the 49th State,
Life in Alaska Leading to Statehood,
and Castner's Cutthroats: Forgotten Warriors
www.anchoragemuseum.org



Crane Watch by Donna Martin.

Pratt Museum

MAY TO JUNE 28 *Reflections of Spill: 20 Years Later*

JULY 3 to AUG 16 *Remember Mars*

Mars Cove Volunteers & Exxon Crude
Photographs by Linda Smogor

ConocoPhillips Gallery in Grant Hall

APU campus, 4101 University Dr

MAY 1-31

"*dedication,*" artwork includes KBWS artist Paula Dickey

Kenai Visitors & Cultural Center

SUMMER 2009

Contemporary Summer Art Show: "Reflections on
Alaska Statehood: the 49th at 50."

Creative Opportunities

MAY 7 RING OF FIRE MEADERY SHOREBIRD COMPETITION art of all mediums with the theme of "birds"
Entry Deadline May 7. Art judged by public.

JUNE 6 Deadline 35th ANNUAL ALASKA WATERCOLOR SOCIETY JURIED EXHIBITION Sept 4-30, slide entries
received by May 6, juror Don Andrews, contact: Chris Zafren <czafren@alaska.com> or download prospectus at
<http://www.akws.org/>

AUG 7 - 8 JANET ROGERS: PORTRAITS and FLORALS / KBWS Watercolor Workshop, contact: Elizabeth Petersen
299-2218 elizabethpetersen@yahoo.com

AUG 10-14 DON ANDREWS: COLOR EMPHASIS LANDSCAPE,
Early Registration before June 1 is \$485; After June 1 is \$505. Class size is limited. Registration Form and Materials List available at www.akws.org

JUL 19 -AUG 2 FAIRBANKS ARTS FESTIVAL, Judi Betts Watercolor classes, <http://www.fsaf.org>

ARTRAGEOUS AUGUST AUG 1-31 A month long celebration of the arts in a community noted for it's art!
Events all around town. Call the Homer Chamber of Commerce 235-4288 <http://www.homer.alaska.org/ArtRageous.htm>. Join in on location sketching and plein air painting events.



Kachemak Bay Watercolor Society presents

Janet Rogers AWS, NWS

WATERCOLOR WORKSHOP Portraits and Florals

*Thursday, Aug. 7 through
Sunday, Aug. 9, 2009*



9am - 4 pm

Location: **Land's End Resort
and Quarterdeck**

4786 Homer Spit Road, Homer

Cost: \$250

Class size: limit 22 students

10% discount on tuition

for K.B.W.S. members

SCHOLARSHIPS AVAILABLE

* Check for Scholarship info

in this "KBWS Newsletter"

Land's End Resort is located at the end of the Homer Spit with access to the beaches and landscapes that characterize Kachemak Bay. Until June 16th, Land's End is offering a 10% discount to people who book a room there. They must mention Kachemak Bay Watercolor Society upon booking....the local number is 907-235-0400. <http://www.lands-end-resort.com> 1-800-478-0400
There is also camping and lodging in the Homer area. **Homer info:** <http://www.homeralaska.org>

Please send registration fee of \$100 non-refundable deposit (unless class fills) to:
Elizabeth Petersen, WORKSHOPS, KBWS, P.O.Box 58, Homer, Alaska 99603. Participants will be accepted in order in which deposit checks are received. If workshop is filled, deposit will keep the applicant on waiting list, to be refunded in the event a space does not become available. A confirmation will be sent upon receipt of the deposit. For additional information contact:
Elizabeth Petersen 299-2218 elizabethpetersen@yahoo.com

JANET ROGERS WORKSHOP

Friday, Aug 7 - Saturday, Aug 8 - Sunday, Aug 9, 2009

Name _____

Address _____

City _____ State _____ Zip Code _____

Phone _____ Amount Enclosed _____



KACHEMAK BAY WATERCOLOR SOCIETY
 P.O.Box 98 Homer, Alaska 99603

*He who works with his hands is a laborer.
 He who works with his hands and his head is a craftsman.
 He who works with his hands, his head, and his heart is an artist.*
 - St. Francis of Assisi

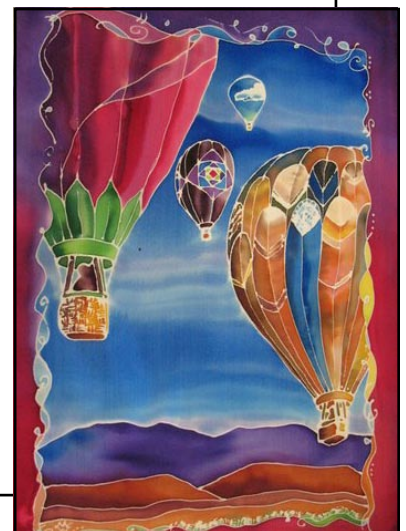
Send news items by October 15 to KBWS, P.O.Box 98, Homer, Alaska 99603. Thank you to all contributors and editors. Photos were taken by Michael Murray, Mary Bee Kaufman, Christina Whiting. Reporters were Michael Murray, Donna Martin, and the



*"Hooded Merganser"
 by Janaan Kitchen*

SUMMER 2009 Calendar

MAY 1	Tues	13th ANNUAL KBWS SPRING SHOW at the FIREWEED GALLERY First Friday at the KBWS Corner
MAY 7-10	Thurs-Sun	SHOREBIRD FESTIVAL
JUNE 2		Drop off NEW paintings for KBWS corner at the FIREWEED GALLERY
JUNE 5	Fri	First Friday at the KBWS Corner
JUNE 6	Sat	Deadline slides for AKWS 35th Annual Juried Watercolor Exhibit
JUNE 3	Wed	Pick up paintings from Fireweed.
JUNE 4	Thurs	The corner will be rehung using Spring Show paintings. New paintings are always welcome.
JUL 1	Wed	Bring New Paintings to Fireweed
JUL 3	Fri	First Friday at the KBWS Corner



art by Julia Crocetto

Fireweed Gallery

on the corner, 475 E. Pioneer Ave.

Homer, Alaska. Hours open:

10-7pm Mon-Sat, 11-5pm Sun

Winter 10:30-5:30 Mon-Sat

907-235-3411

art@fireweedgallery.com

